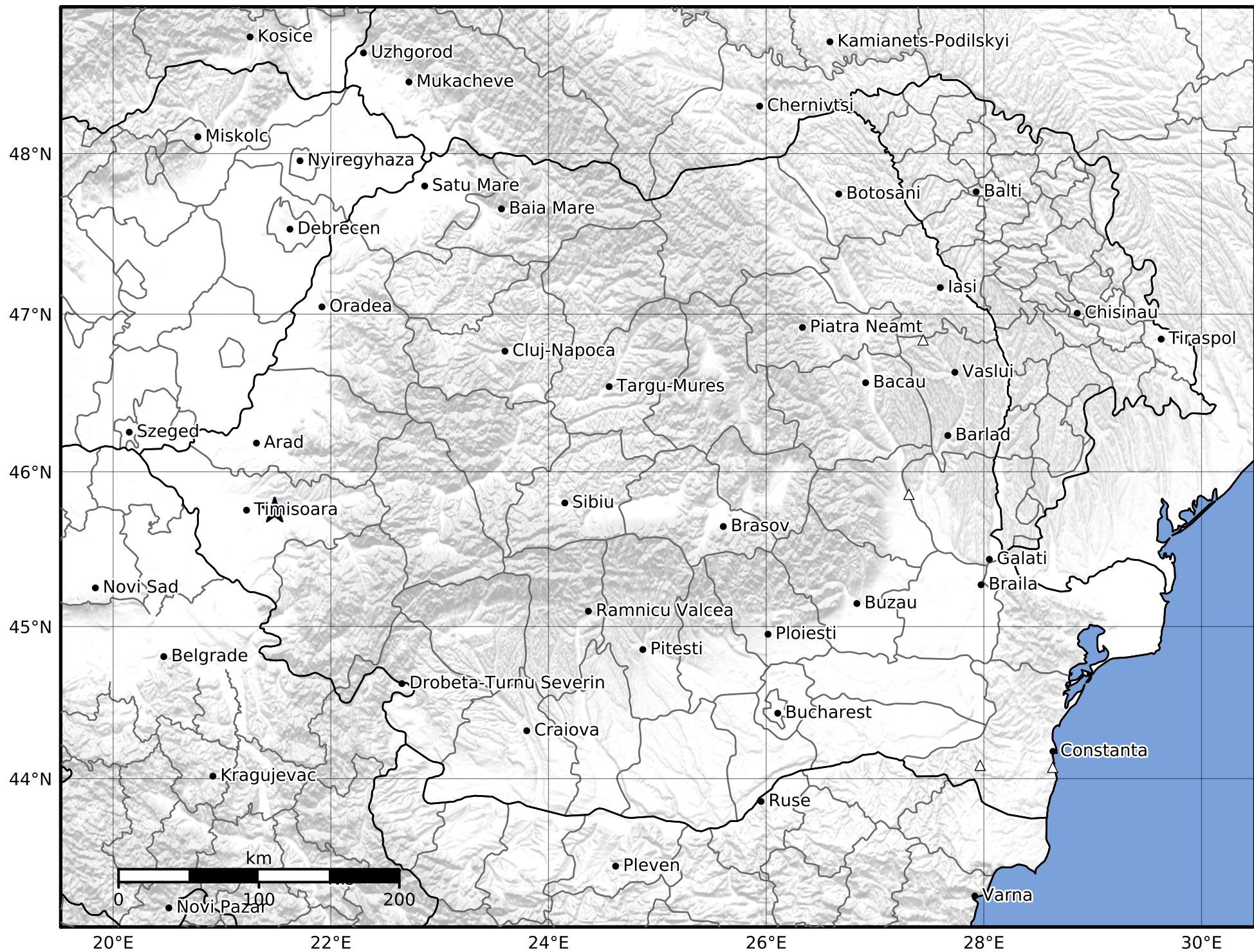


Macroseismic Intensity Map  
 INFP ShakeMap: Banat - Timis  
 Dec 24, 2021 09:28:56 UTC M2.3 N45.75 E21.48 Depth: 5.0km  
 ID:2021122409285669



SHAKING	Not felt	Weak	Light	Moderate	Strong	Very strong	Severe	Violent	Extreme
DAMAGE	None	None	None	Very light	Light	Moderate	Moderate/heavy	Heavy	Very heavy
PGA(%g)	<0.05	0.3	2.76	6.2	11.5	21.5	40.1	74.7	>139
PGV(cm/s)	<0.02	0.13	1.41	4.65	9.64	20	41.4	85.8	>178
INTENSITY	<b>I</b>	<b>II-III</b>	<b>IV</b>	<b>V</b>	<b>VI</b>	<b>VII</b>	<b>VIII</b>	<b>IX</b>	<b>X+</b>

Scale based on Worden et al. (2012)

Version 1: Processed 2022-10-01T08:11:13Z

△ Seismic Instrument      ○ Macroseismic Observation      ★ Epicenter