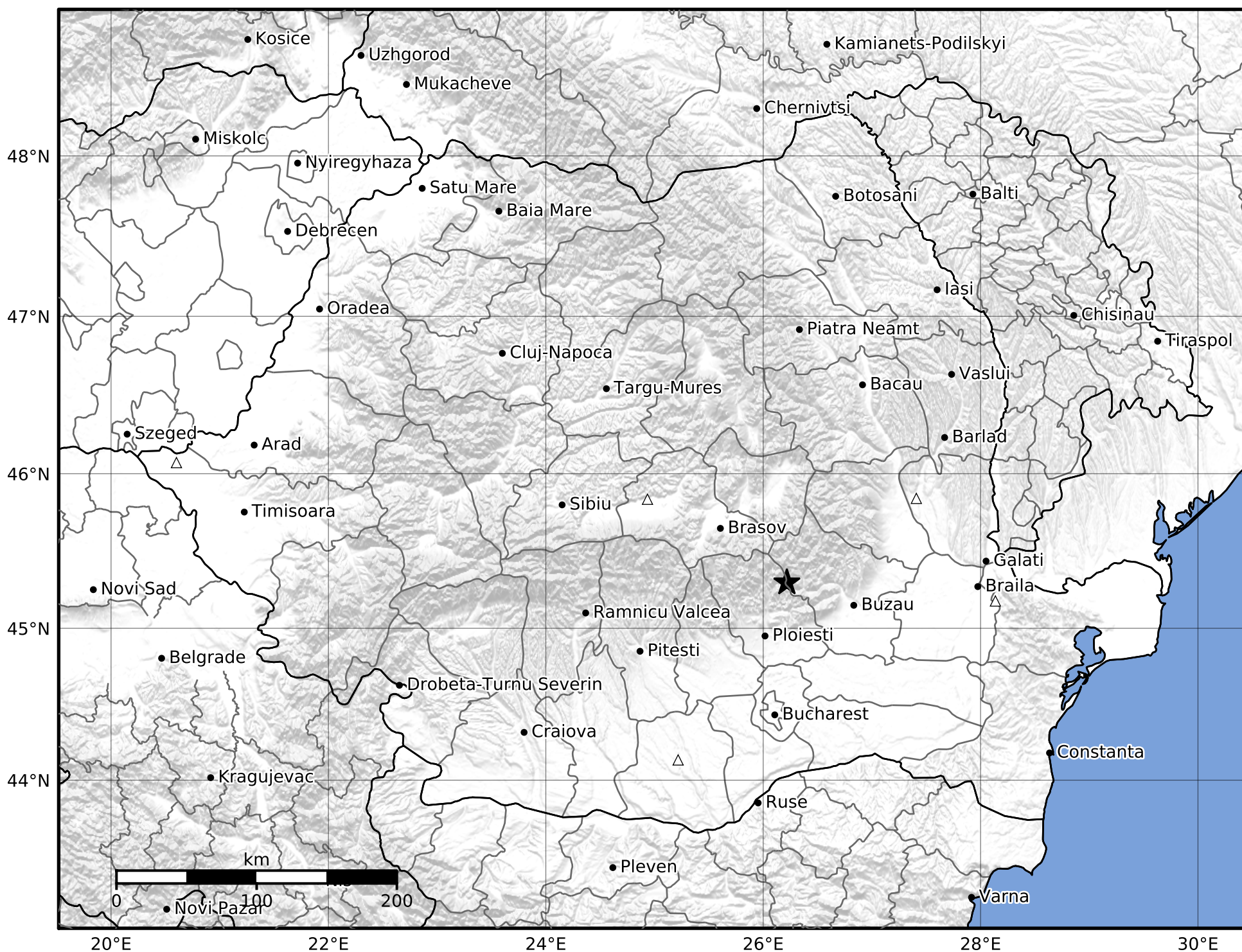


Macroseismic Intensity Map  
 INFP ShakeMap: Zona seismică Vrancea - Prahova  
 Dec 28, 2021 15:35:42 UTC M2.2 N45.30 E26.22 Depth: 30.0km  
 ID:2021122815354269



SHAKING	Not felt	Weak	Light	Moderate	Strong	Very strong	Severe	Violent	Extreme
DAMAGE	None	None	None	Very light	Light	Moderate	Moderate/heavy	Heavy	Very heavy
PGA(%g)	<0.05	0.3	2.76	6.2	11.5	21.5	40.1	74.7	>139
PGV(cm/s)	<0.02	0.13	1.41	4.65	9.64	20	41.4	85.8	>178
INTENSITY	<b>I</b>	<b>II-III</b>	<b>IV</b>	<b>V</b>	<b>VI</b>	<b>VII</b>	<b>VIII</b>	<b>IX</b>	<b>X+</b>

Scale based on Worden et al. (2012)

Version 1: Processed 2022-10-03T10:02:37Z

△ Seismic Instrument      ○ Macroseismic Observation      ★ Epicenter