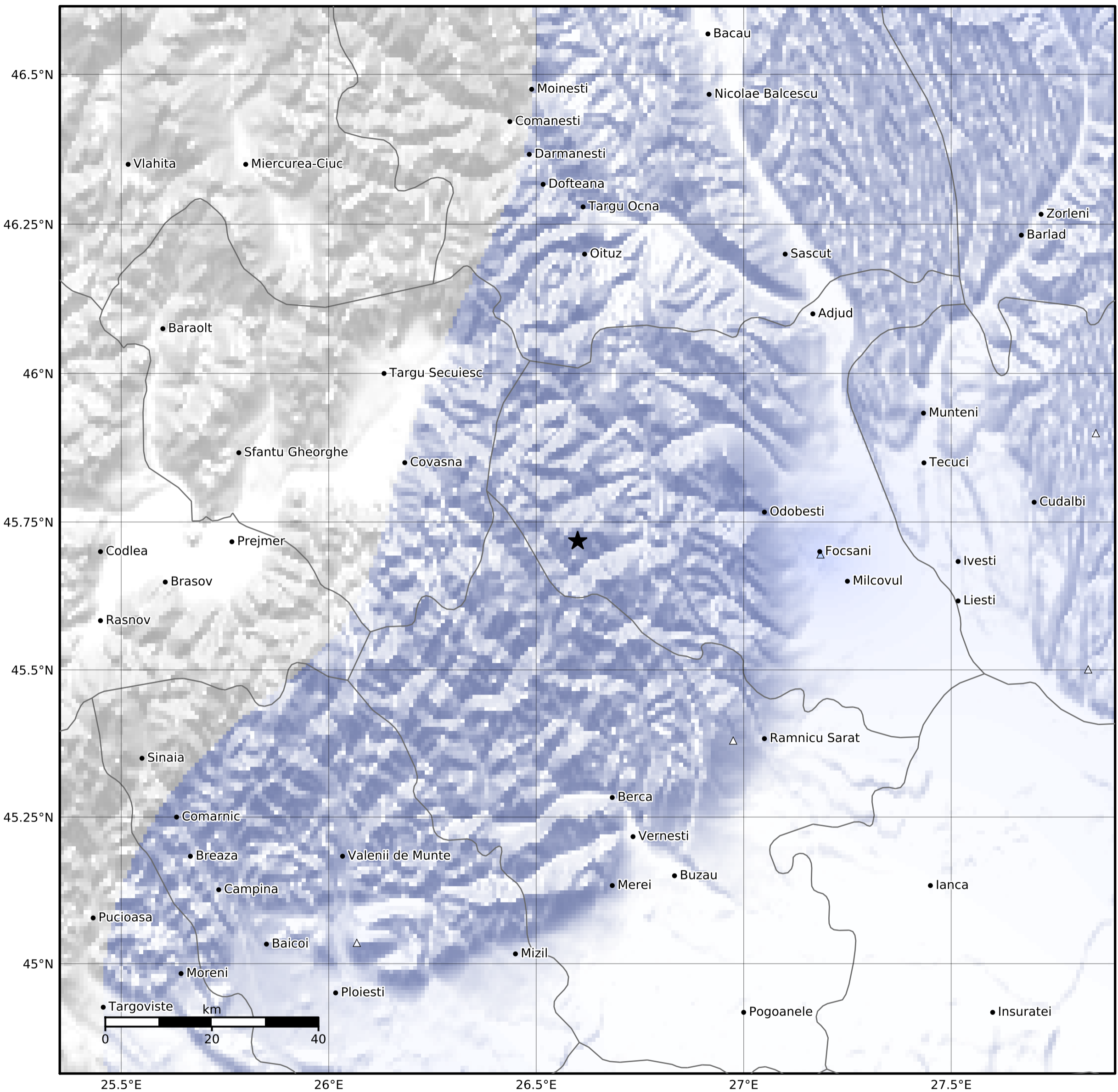


Macroseismic Intensity Map
 INFP ShakeMap: Zona seismica Vrancea - Vrancea
 Mar 14, 2022 07:32:10 UTC M4.3 N45.72 E26.60 Depth: 97.0km
 ID:2022031407321010



SHAKING	Not felt	Weak	Light	Moderate	Strong	Very strong	Severe	Violent	Extreme
DAMAGE	None	None	None	Very light	Light	Moderate	Moderate/heavy	Heavy	Very heavy
PGA(%g)	<0.05	0.3	2.76	6.2	11.5	21.5	40.1	74.7	>139
PGV(cm/s)	<0.02	0.13	1.41	4.65	9.64	20	41.4	85.8	>178
INTENSITY	I	II-III	IV	V	VI	VII	VIII	IX	X+

Scale based on Worden et al. (2012)

Version 1: Processed 2022-03-14T10:13:21Z

△ Seismic Instrument ○ Macroseismic Observation ★ Epicenter