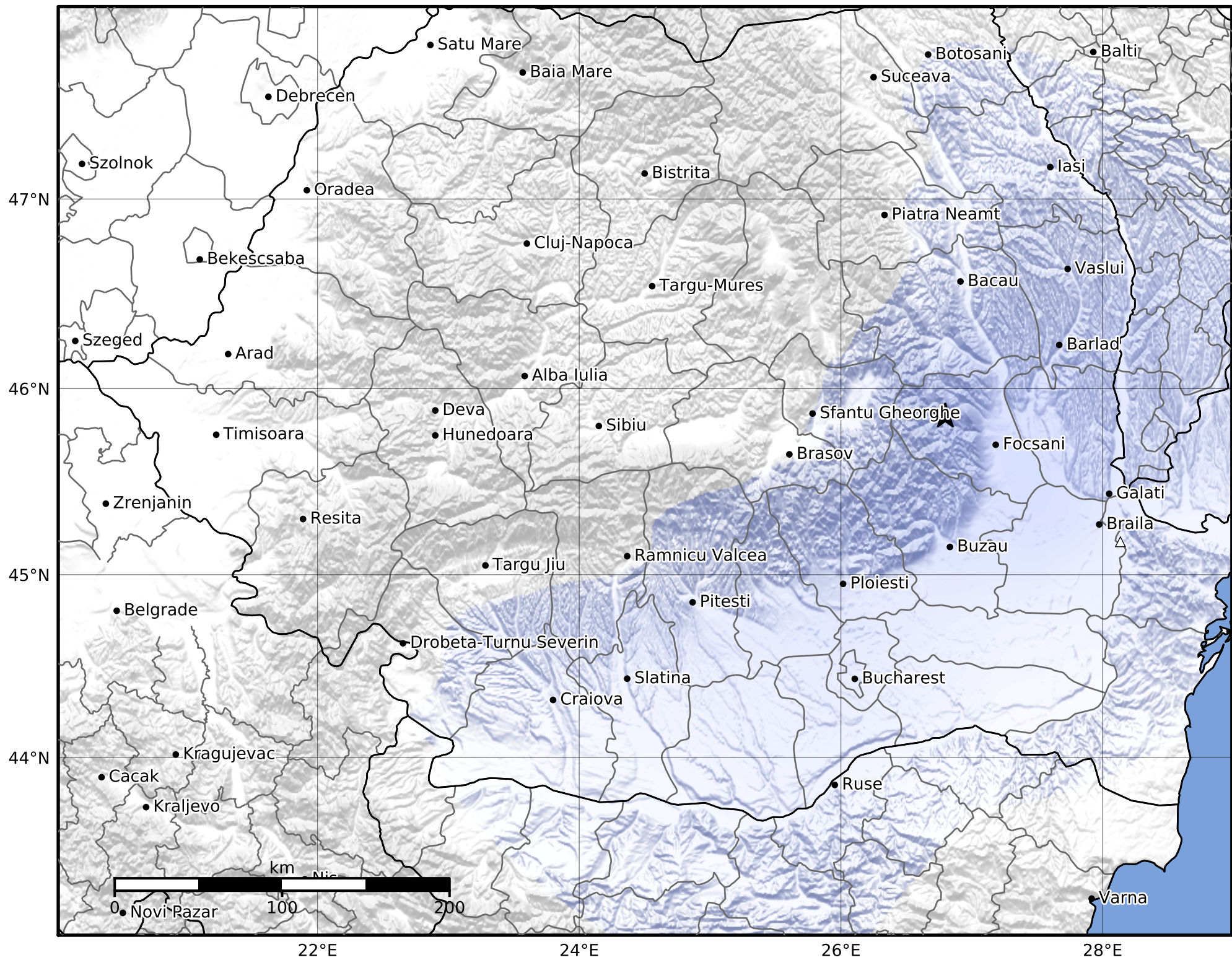


Macroseismic Intensity Map  
 INFP ShakeMap: Zona seismica Vrancea - Vrancea  
 Mar 16, 2022 20:19:34 UTC M3.0 N45.85 E26.80 Depth: 120.0km  
 ID:2022031620193457



SHAKING	Not felt	Weak	Light	Moderate	Strong	Very strong	Severe	Violent	Extreme
DAMAGE	None	None	None	Very light	Light	Moderate	Moderate/heavy	Heavy	Very heavy
PGA(%g)	<0.05	0.3	2.76	6.2	11.5	21.5	40.1	74.7	>139
PGV(cm/s)	<0.02	0.13	1.41	4.65	9.64	20	41.4	85.8	>178
INTENSITY	<b>I</b>	<b>II-III</b>	<b>IV</b>	<b>V</b>	<b>VI</b>	<b>VII</b>	<b>VIII</b>	<b>IX</b>	<b>X+</b>

Scale based on Worden et al. (2012)

Version 1: Processed 2022-09-30T09:07:57Z

△ Seismic Instrument

○ Macroseismic Observation

★ Epicenter