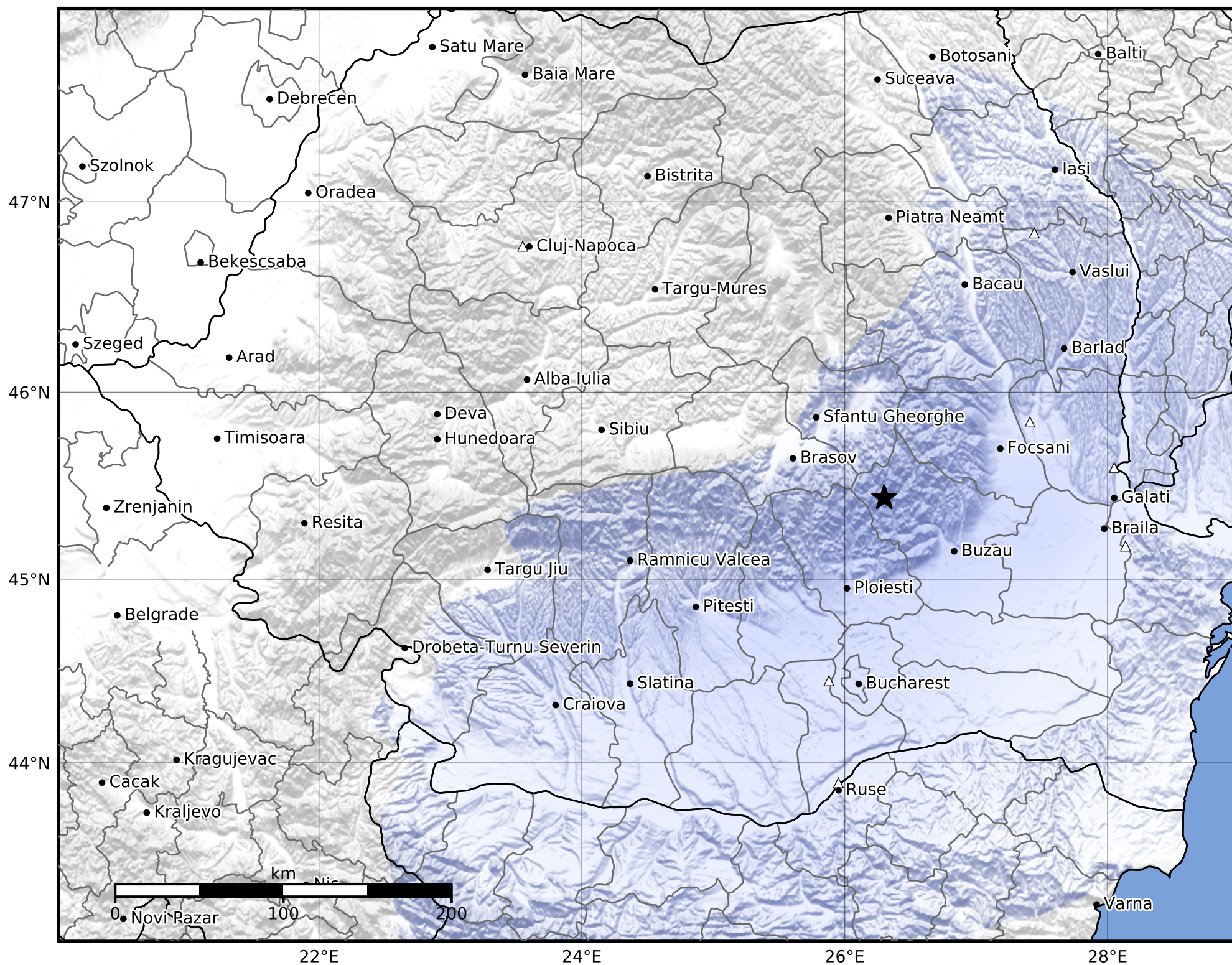


Macroseismic Intensity Map  
 INFP ShakeMap: Zona seismică Vrancea - Buzău  
 Jun 30, 2022 01:52:24 UTC M3.2 N45.44 E26.30 Depth: 140.0km  
 ID:2022063001522450



|           |          |               |           |            |           |             |                |           |            |
|-----------|----------|---------------|-----------|------------|-----------|-------------|----------------|-----------|------------|
| SHAKING   | Not felt | Weak          | Light     | Moderate   | Strong    | Very strong | Severe         | Violent   | Extreme    |
| DAMAGE    | None     | None          | None      | Very light | Light     | Moderate    | Moderate/heavy | Heavy     | Very heavy |
| PGA(%g)   | <0.05    | 0.3           | 2.76      | 6.2        | 11.5      | 21.5        | 40.1           | 74.7      | >139       |
| PGV(cm/s) | <0.02    | 0.13          | 1.41      | 4.65       | 9.64      | 20          | 41.4           | 85.8      | >178       |
| INTENSITY | <b>I</b> | <b>II-III</b> | <b>IV</b> | <b>V</b>   | <b>VI</b> | <b>VII</b>  | <b>VIII</b>    | <b>IX</b> | <b>X+</b>  |

Scale based on Worden et al. (2012)

Version 6: Processed 2022-09-29T07:08:08Z

△ Seismic Instrument

○ Macroseismic Observation

★ Epicenter