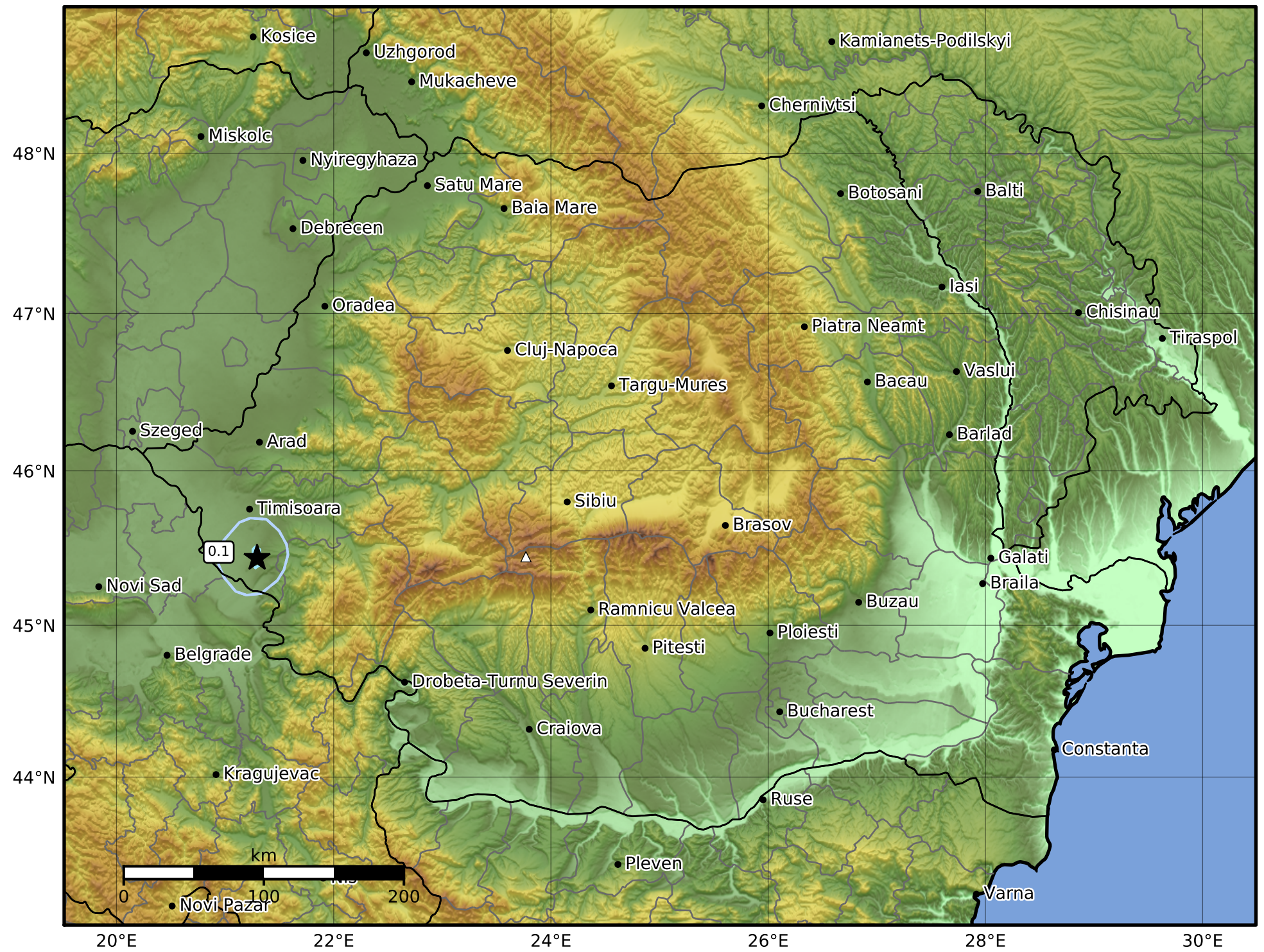


Peak Ground Velocity Map  
INFP ShakeMap: Banat - Timis  
Jan 13, 2024 09:08:28 UTC M3.8 N45.44 E21.29 Depth: 5.0km  
ID:2024011309082878



Scale based on Worden et al. (2012)

Version 1: Processed 2024-01-13T10:34:56Z

△ Seismic Instrument      ○ Macroseismic Observation      ★ Epicenter