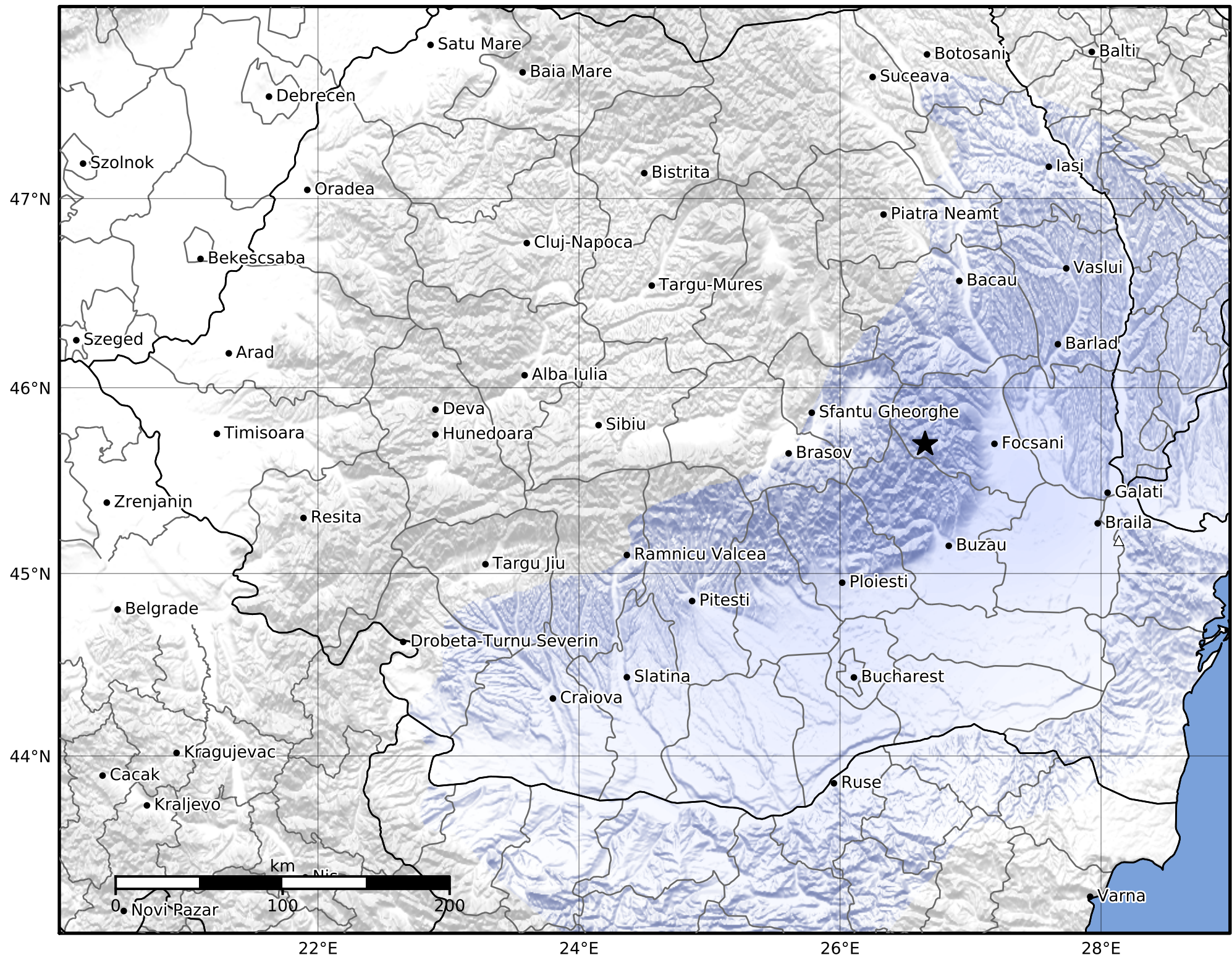


Macroseismic Intensity Map
 INFP ShakeMap: Zona seismică Vrancea - Vrancea
 Nov 12, 2024 23:14:44 UTC M3.0 N45.70 E26.65 Depth: 123.0km
 ID:2024111223144426



| | | | | | | | | | |
|-----------|----------|---------------|-----------|------------|-----------|-------------|----------------|-----------|------------|
| SHAKING | Not felt | Weak | Light | Moderate | Strong | Very strong | Severe | Violent | Extreme |
| DAMAGE | None | None | None | Very light | Light | Moderate | Moderate/heavy | Heavy | Very heavy |
| PGA(%g) | <0.05 | 0.3 | 2.76 | 6.2 | 11.5 | 21.5 | 40.1 | 74.7 | >139 |
| PGV(cm/s) | <0.02 | 0.13 | 1.41 | 4.65 | 9.64 | 20 | 41.4 | 85.8 | >178 |
| INTENSITY | I | II-III | IV | V | VI | VII | VIII | IX | X+ |

Scale based on Worden et al. (2012)

Version 1: Processed 2024-11-12T23:50:31Z

△ Seismic Instrument ○ Macroseismic Observation ★ Epicenter