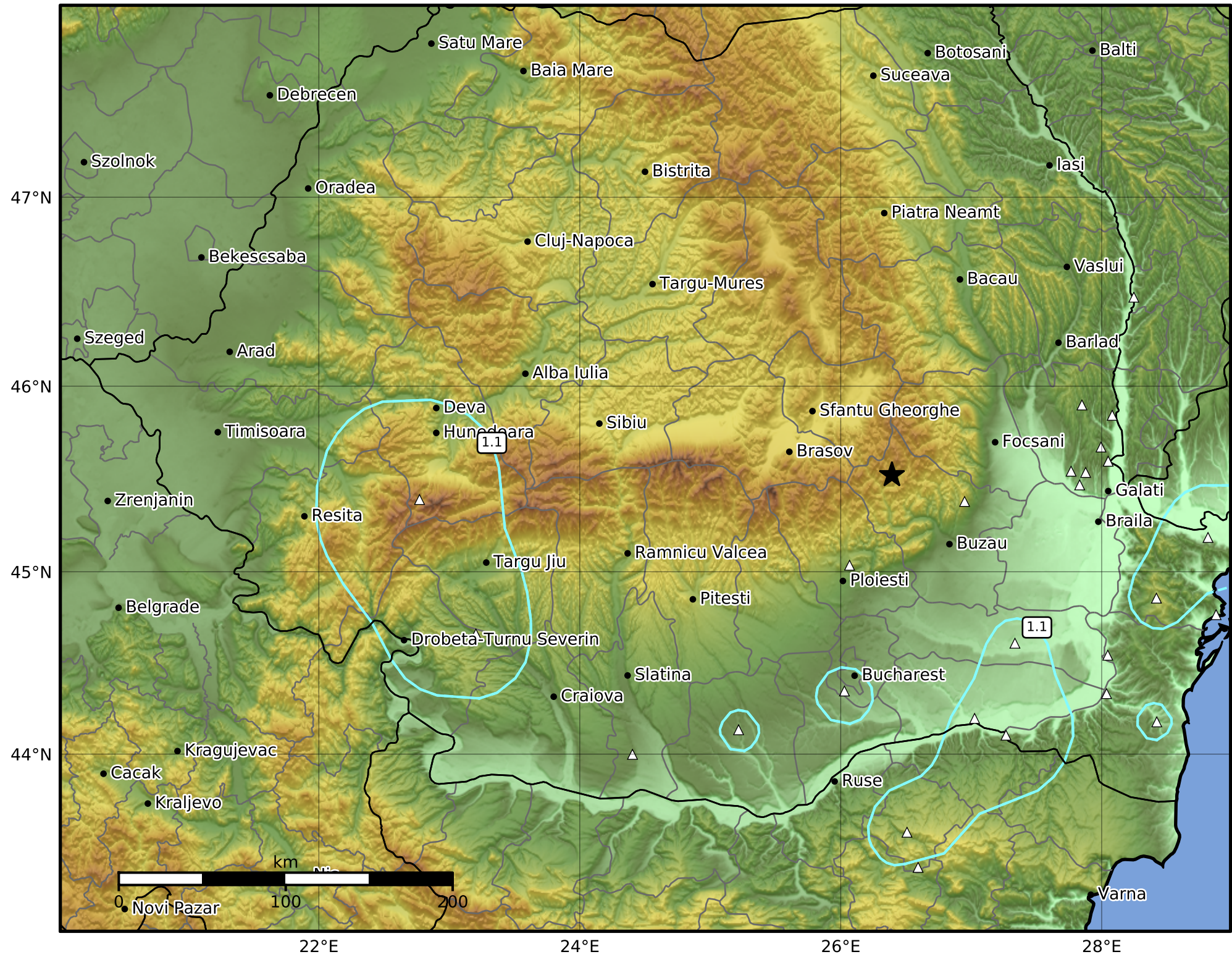


Peak Ground Velocity Map  
 INFP ShakeMap: Zona seismica Vrancea - Buzau  
 Feb 10, 2025 16:31:41 UTC M3.8 N45.52 E26.39 Depth: 116.0km  
 ID:2025021016314157



PGV (cm/s)	0.1	0.3	0.5	0.7	1	3	5	7	10	30	50	70
------------	-----	-----	-----	-----	---	---	---	---	----	----	----	----

Scale based on Worden et al. (2012)

Version 1: Processed 2025-02-10T17:26:23Z

△ Seismic Instrument      ○ Macroseismic Observation      ★ Epicenter